



TSM Studio Server –
Operational
Reporting
2.8.4.7

Table of Contents

Disclaimer	3
What is TSM Studio Server Operational Reporting?	4
Upgrading from a version prior to 2.8.4.7	4
Getting Started	5
Custom Summary.....	7
Activity Log Filter	9
Scheduling Operational Reports	10
Operational Reporting Status	13

Disclaimer

Direct, incidental, consequential, indirect, or punitive damages arising out of your access to, or use of, the site and articles within. Without limiting the foregoing, everything on the site is provided to you 'AS IS' WITHOUT WARRANTY OF ANY KIND, EITHER EXPRESSED OR IMPLIED, INCLUDING, BUT NOT LIMITED TO, THE IMPLIED WARRANTIES OF MERCHANTABILITY, FITNESS FOR A PARTICULAR PURPOSE, OR NON INFRINGEMENT.

"Please note that some jurisdictions may not allow the exclusion of implied warranties, so some of the above exclusions may not apply to you. Check your local laws for any restrictions or limitations regarding the exclusion of implied warranties."

What is TSM Studio Server Operational Reporting?

TSM Studio Server Operational Reporting offers a set of pre-packaged reports that can be run daily to access the Operational Health of your TSM Server's.

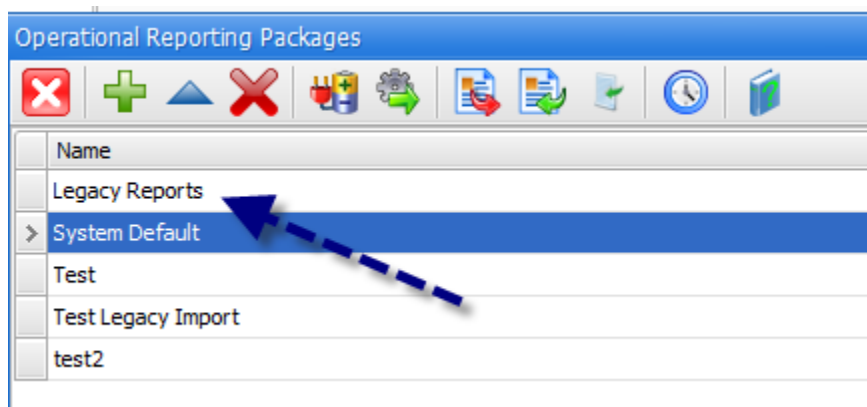
Although the reports are pre-packaged their look and feel can be totally customized to the way you want them to look using the in-built report designer.

All the pre-packaged sections are in a package named "System Default", this package cannot be modified and will be updated with each subsequent release. The System Default can be used as a base to create your own packages.

Upgrading from a version prior to 2.8.4.7

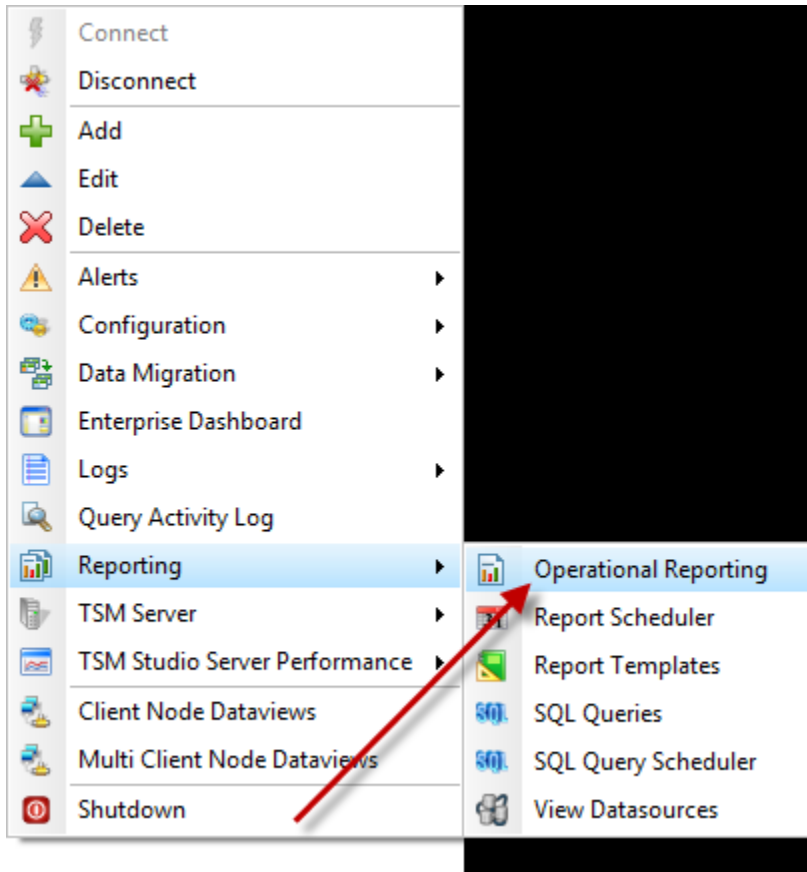
There have been major enhancements to the Operational Reporting module in 2.8.4.7. Prior to 2.8.4.7 there was only one Operational Report with a number of sections. To provide more flexibility and to allow different versions of the Operational Report to be created Operational Reports are now created in Packages. Each Package will have the same sections but each Operational Reporting Package can be customized independently from other packages. This will allow send different Operational Reports to different audiences.

After Upgrading from a previous version the old Operational Report will be placed in a package named "Legacy Report"

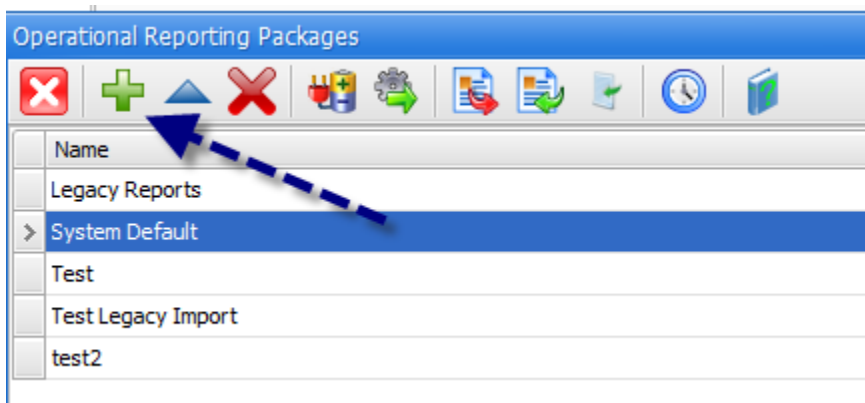


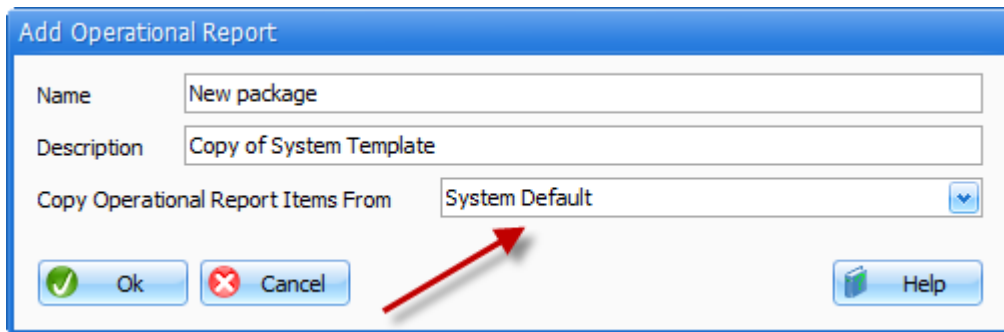
Getting Started

Operational Report is accessed from the TSM Studio Server main menu

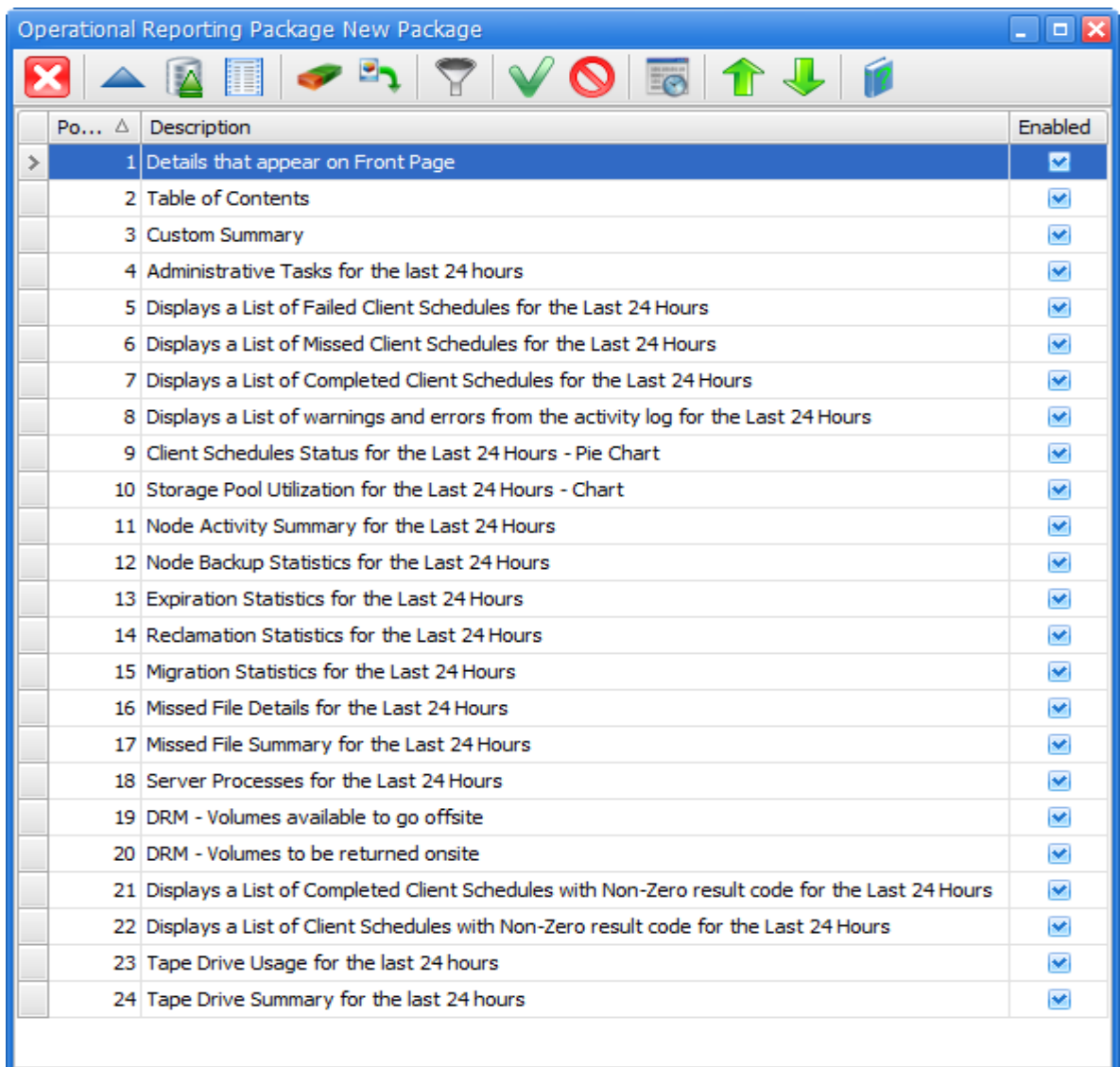


The first step is to make a copy of the "System Default" package. This is done by adding a new package using the "System Default" package as the template.





The new Operational Reporting package will now be created and the following dialog will be displayed showing all the available sections (also known as package items) for this operational report.



Each section can be edited in the report designer and modified as required. Sections can be disabled so that they will not appear in the report. Also the position of each section can be changed using the "Up" and "Down" arrows on the toolbar.

Please see our getting started with the report designer on how to use the "Report Designer" to modify report sections.

Custom Summary

Each Operational Reporting package has a section named "Custom Summary" which produces output in the Operational Report as follows

Custom Summary

Item	Result
Last Database Backup:	2/10/2011 1:00:04 PM
Database Cache Hit Ratio:	99.80
Database Utilization:	37.80
Log Utilization:	0.70
Max Log Utilization:	5.90
Drive Paths Offline:	0
Drives Offline:	0
LB0.1.0.3 Drive Count:	10
Total Drives:	10
Library Paths Offline:	0
Total Scratch Volumes:	4
LB0.1.0.3 Scratch Volume Count:	4
Total Nodes:	24
AIX:	0
Celerra:	0
Linux64:	0
Linux86:	0
NetWare:	0

Please note: this is only a small area of this section for display purposes only.

Each line on this report can be enabled\disabled as desired. Editing of the "Custom Summary" section is done using the "Custom Summary" button on the toolbar.

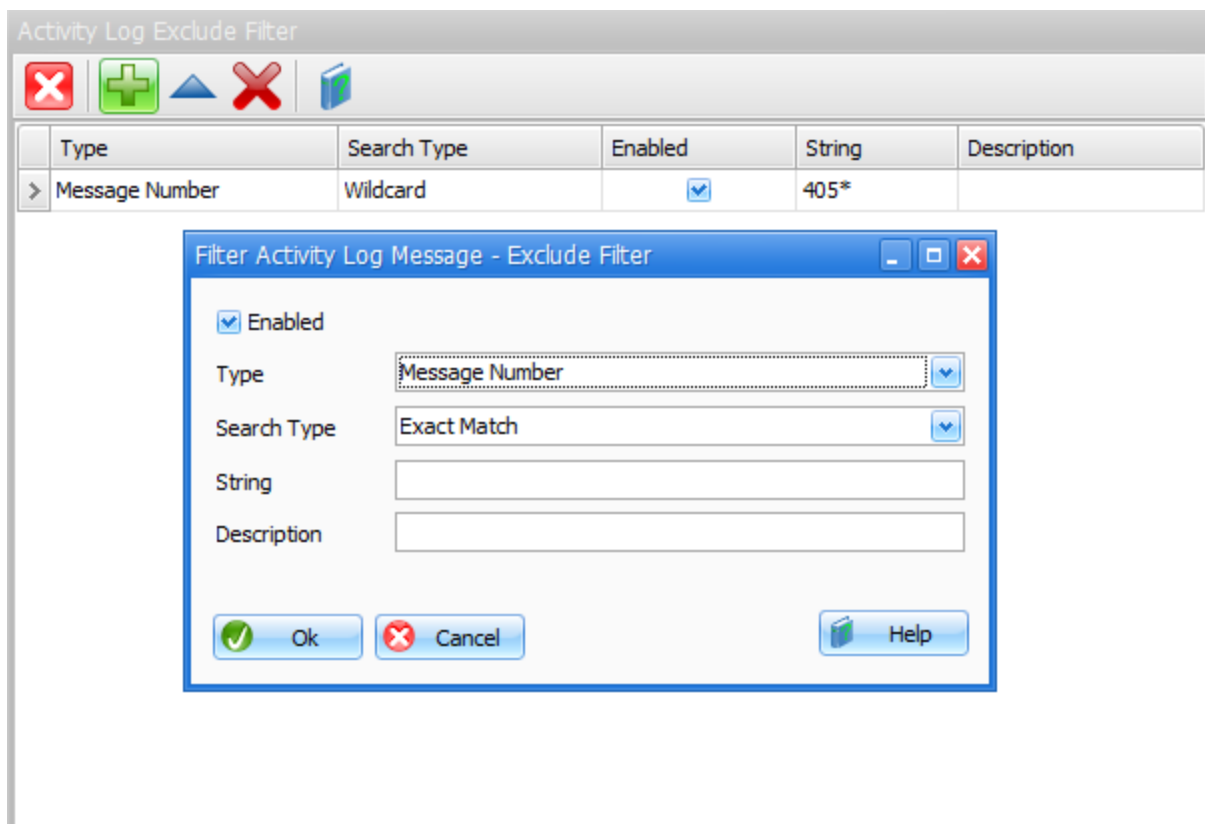


This will display the following dialog where each line of the custom summary report can be removed, the order changed or the label that appears in the operational report changed.

Pos...	Section	Original Label	Custom Label	Supported on TSM v5	Supported on TSM v6
1	Database	% Database Utilization:		False	True
2	Database	Last Database Backup:		True	True
3	Database	Database Buffer Hit Ratio:		False	True
4	Database	Database Free Space MB:		False	True
5	Database	Database Total Space MB:		False	True
6	Database	Database Cache Hit Ratio:		True	False
7	Database	Database Used Space MB:		False	True
8	Database	Database Utilization:		True	False

Activity Log Filter

The Activity Log section of the Operational Report can be filtered to remove messages that are not required on the report. To filter activity log messages use the "Filter Icon" on the toolbar.



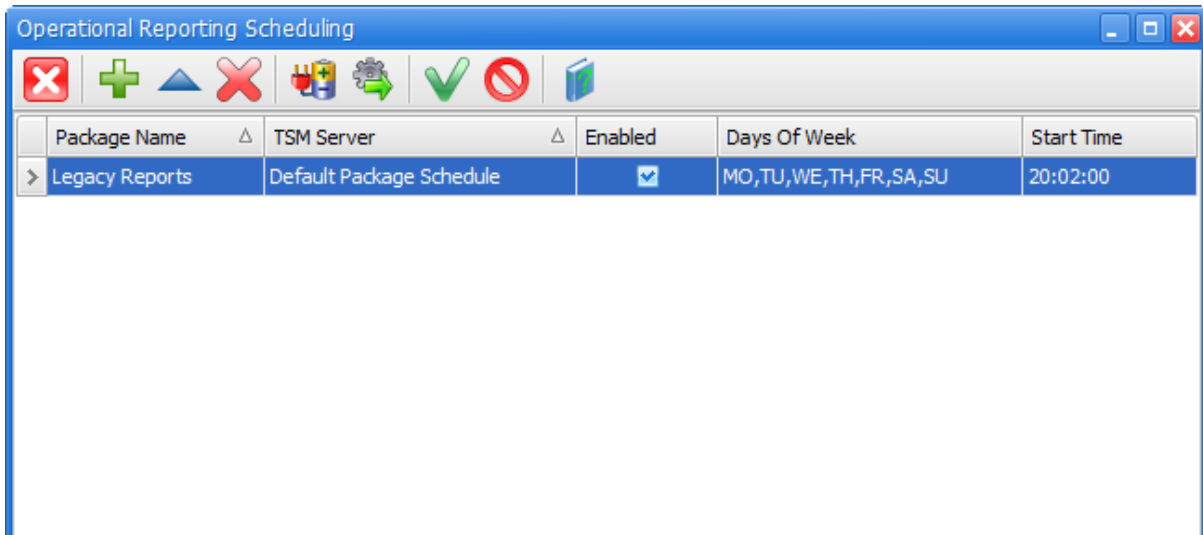
Use the Activity Log Filter to remove messages by message number or message text. A number of filter options are available.

Scheduling Operational Reports

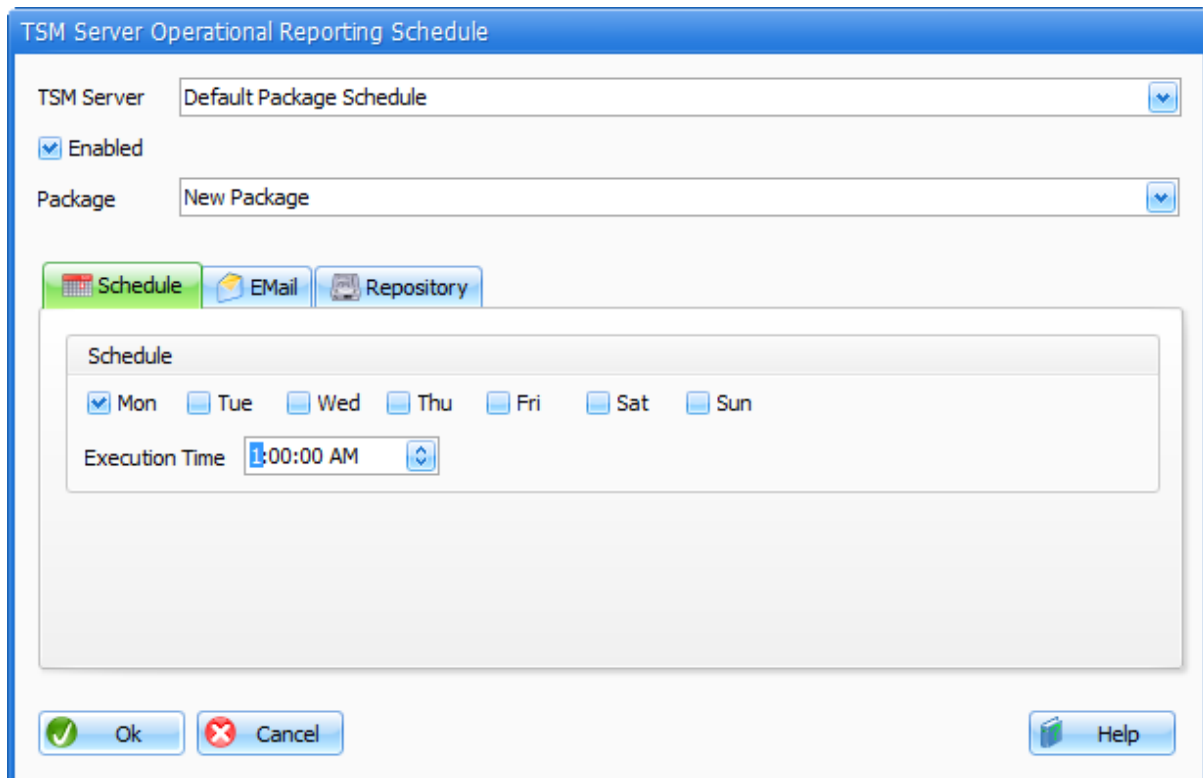
To schedule an Operational Report select the "Schedule" option from the toolbar.



The following dialog is displayed showing the currently setup schedules.



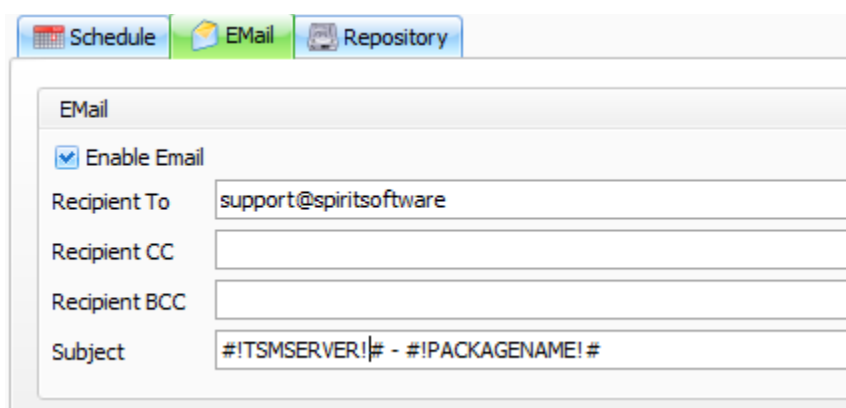
Select the Add icon from the toolbar



Each TSM Server can be scheduled separately for each package or a default package can be created for each package. Any TSM Server that does not have its own schedule will use the default schedule setup for this package. Each schedule can be enabled\disabled. A disabled schedule will not run.

Choose the days that the Operational Reporting package can run for the selected TSM Server and the time of day to run.

Operational Reports can published via email or saved to disk.



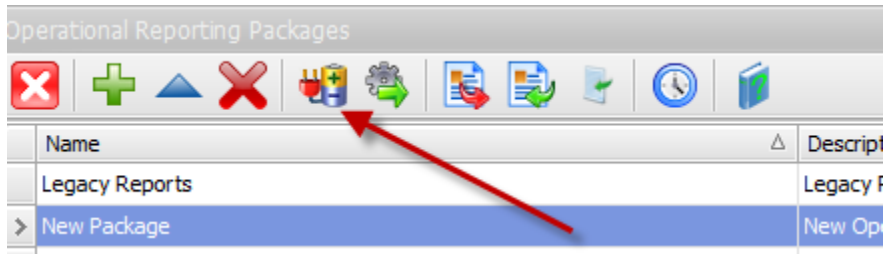
Choose the Email tab and choose the recipients and the subject. The subject field may contain a number of substitution strings. Press the help button on this dialog for the complete list. Check the Enable check box to enable Email publication.



Use the repository tab to choose saving to disk. Check the "Save Report to Disk" to enable this publication method. Type in the location on the TSM Studio Server where the reports will be saved to. A number of string substitutions are available press the help button for a complete list.

Operational Reporting Status

Operational Reporting status can be viewed from the initial Operational Reporting dialog.



This will show the status of currently running and the last completed Operational Report.

Package Name	TSM Server Name	Running	Last Start Time	Last End Time	Current Status
> New Package	Spirit Software Server 1	True	3/10/2011 2:34:12...	1/01/0001 12:00:...	Creating Report Part - Front Page